

ASM's MBA

**A TRANSFORMATIONAL
COURSE THAT NOT
ONLY TEACHES YOU
BUSINESS SKILLS
BUT ALSO HOW
TO SUCCEED**

*BE THE FIRST TO GET A MBA PREMIUM
WITH GLOBAL CERTIFICATIONS*

**Two years full time AICTE approved course,
Affiliated to Savitribai Phule Pune University With
Advance Career Development**

**IBMR MBA 32nd Batch
DTE Code: MB6102**



ASM

Education • Research • Consultancy

www.asmgroupp.edu.in

A lighthouse stands on a dark, silhouetted cliff overlooking the ocean. The sky is a gradient of colors from a deep blue at the top to a warm orange and red near the horizon, suggesting a sunset or sunrise. The text is centered in a bold, white, sans-serif font.

**CHANGING
LIVES.
CHANGING
THE WORLD.**

ABOUT ASM

Established in 1983, the Audyogik Shikshan Mandal (ASM) Group of Institutes has completed 39 years in the field of education. Through this period, ASM has persistently provided the corporate world with well prepared professionals. This history of excellence has been validated by the fact that ASM has consistently been ranked amongst the top B-Schools in India.

The faculty of ASM comprises of the best in industry and academia. The faculty members for the course are a rich blend of academicians, industry practitioners teaching faculty and mentors from industry. ASM has excellent industry-institute interaction for more than 3 decades and tie-ups with leading organizations for cutting edge certifications for enhanced skills leading to employability.

ASM boasts of a strong alumni base of 72000+ graduates in leading corporates, who are very closely associated with the institute for placements & industry interfacing.



FROM THE CHAIRMAN'S DESK



Dr. Sandeep Pachpande
Chairman,
ASM Group of Institutes

BE (Comp), MBA (UK),
PhD (Intl Mktg), SELP
(Harvard Business School)

Passionate about excellence, we at Audyogik Shikshan Mandal are rapidly moving towards developing globally relevant education in India. Our international collaborations with Harvard Business School's HBX CORE, IBM, SAP, etc., have now made us pioneers in bringing in a multinational cutting-edge pedagogy that gives students the kind of exposure and experience comparable only to global standards. ASM's EDGE, an Innovative pedagogical approach is a unique focused program to guarantee employability of ASM students through a holistic cutting-edge certification program providing contemporary management skills in association with the leading corporates and top business schools in the world.

ASM's highly trained faculty considers it their mission to provide inputs to improve the caliber of every student and motivates them to be world leaders. ASM invites guest faculty from the best in the world to share their expert knowledge with the students at ASM's IBMR. Use of case study methodology of teaching and emphasis on critical thinking are the unique strengths of ASM's IBMR which provide students with a learning experience focused on creativity, critical and design thinking and global exposure to achieve their career objectives. ASM IBMR is a benchmark in management education and is aptly reflected by its high ranking in leading B-School surveys.

The time that students spend on ASM campus is filled with so much of learning – a major portion of which happens outside the classroom! As you enter your peer group, they will be eager to provide all guidance and share experiences to make you feel absolutely comfortable and prepared for the course of studies.

During your course work you will have ample opportunity to meet with brilliant academicians, management gurus and industry experts from around the world. Interactions with all these people will not only elevate your level of knowledge but will also enable a cross-fertilization of ideas and exchanges, some of which will serve as game changers for the rest of your lives.

ASM is fully conscious of its commitment for the holistic development of its students. It is not 'All work no play' - we party just as hard as we work and your stay at ASM will be heartily peppered with several on and off campus fun activities including cultural extravaganzas and events.

Above all, the experience that you gather at ASM will be unparalleled, offering you the right cutting EDGE over the competition. ASM provides the perfect formula with all the ingredients to ensure the most magical and exponentially rewarding experiences of your life.

I welcome you all for a rewarding and enriching, learning experience at ASM's IBMR.



Dr. (Mrs) Asha Pachpande
Director, IBMR
Secretary
Audyogik Shikshan Mandal (ASM)

FROM THE DIRECTOR'S DESK

ASM's Institute of Business Management and Research (IBMR) Chinchwad is an established Institute successful for over 3 decades of its operations. It has a great vision and its mission is focusing on developing a competent generation of young managers ready to take all challenges in organisations in India and abroad.

ASM's IBMR is committed to ensure holistic teaching and learning processes, aligned with latest trends in management education and ensuring employability of its students. Since 1983, ASM's IBMR has been providing well educated trained and groomed young executives to industry in India and abroad. ASM's IBMR Alumni have added more than adequate value to organisations they serve and are holding key positions in companies in India and abroad. Few of our alumni have also become successful entrepreneurs contributing to overall economic growth.

It gives me pleasure and happiness to welcome our new batch of students to ASM's IBMR and to provide quality education and holistic development of the students ensuring guaranteed employability. IBMR follows ASM's EDGE pedagogy enabled by competent regular and visiting faculty including experts from global organisations.

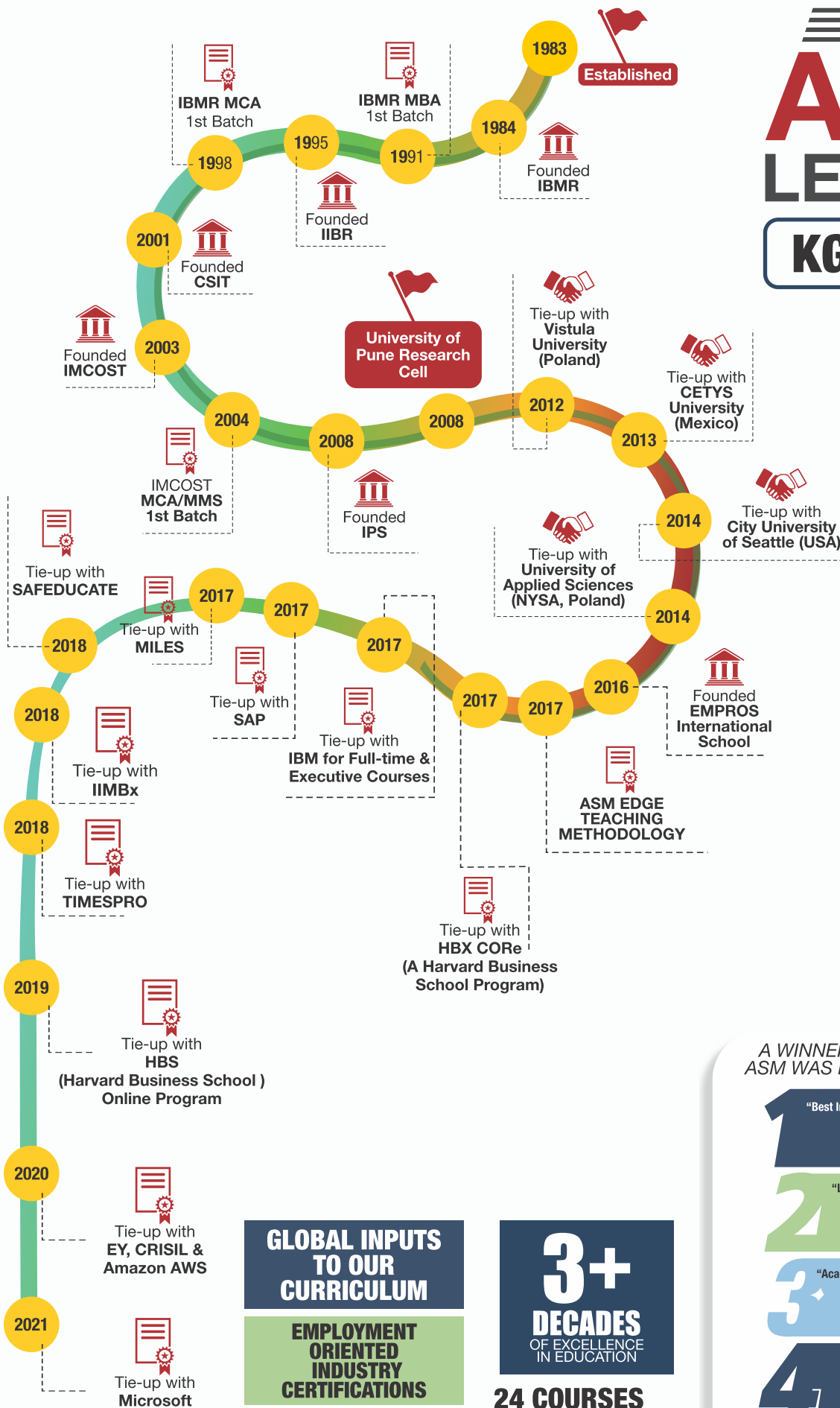
The MBA program at IBMR is recognised and affiliated to Savitribai Phule Pune University (SPPU) and approved by the AICTE, Government of India. IBMR strives to shape quality professionals by providing exposure to global education through Harvard Business School Case Studies, Online Courses and other course material from Harvard Business Publishing and ASM's EDGE courses and provide conducive learning environment to students for their holistic development.

I welcome you once again to discover for yourself all the facets of ASM's IBMR that make the Institute one of the most cherished life time opportunity to our students.

Wishing you best of learning opportunities and good luck in all your endeavors as ASM's IBMR students.

THE ASM LEGACY

KG to Ph.D



GLOBAL INPUTS TO OUR CURRICULUM

EMPLOYMENT ORIENTED INDUSTRY CERTIFICATIONS

72000+ ALUMNI

3+
DECADES
OF EXCELLENCE
IN EDUCATION

24 COURSES
2 UNIVERSITIES
2 CITIES
5 CAMPUSES

A WINNER OF MANY AWARDS, ASM WAS RECENTLY AWARDED

- 1** "Best Institute for Innovation in Curriculum" at ASMA 2017
by Dr. M. P. Poonia, Vice Chairman - AICTE
- 2** "Leading Higher Education Group"
by Business Excellence Research Group (BERG) Singapore
- 3** "Academia and Industry collaborations for Innovative Curriculum to drive Employability"
National Excellence Award 2018 ASSOCHAM India
- 4** "Digital Learning Award 2018" at HE&HR Conclave, Hyderabad from Govt. of Telangana
- 5** "The Best Education Brand 2019" by The Economic Times

INTERNATIONAL COLLABORATIONS / PARTNERSHIPS





MBA

(Dual Specialization)

At ASM'S IBMR

2 YEARS FULL-TIME AICTE APPROVED MBA
FROM SAVITRIBAI PHULE PUNE UNIVERSITY
IBMR 32nd Batch (DTE Code: MB6102)

PROGRAM OBJECTIVE

The MBA curriculum of the university caters to the growing demand of skilled employees in global business houses. The curriculum has been effectively supplemented by additional programs from the best in the world to create leaders in all sectors of Business World.

ELIGIBILITY

Graduates who have secured 50% (45%, for reserved category having Maharashtra domicile) from a recognised university, with a valid CMAT/CAT/MHCET score can apply for admissions. Students appearing for their final year graduation are also eligible to apply.

ADMISSION PROCEDURE

Admission to the course is centralized & conducted by the Directorate of Technical Education (DTE), however students may also apply for the institute level seats. Candidates applying to the institute directly will have to send their 10th, 12th, graduation marksheet, entrance exam score card, & photo ID proof either by email, by post or in person. Once the documents are verified the students will have to appear for the personal interview. On being selected, the candidate may take admission within the stipulated date by paying the tuition fees and submitting the relevant documents in original.

STUDENT EDUCATION LOAN

Vidya Lakshmi is a first of its kind portal for students seeking Education Loan. This portal has been developed under the guidance of Department of Financial Services (Ministry of Finance), Department of Higher Education (Ministry of Education) and Indian Banks Association (IBA). The portal has been developed and being maintained by NSDL e-Governance Infrastructure Limited. Students can view, apply and track the education loan applications to banks anytime, anywhere by accessing the portal. We have tie up with many nationalised and private banks.

<https://www.vidyalakshmi.co.in/Students/index>

MBA

(Dual Specialization)

At ASM'S IBMR

Two years full time, AICTE approved, Affiliated to Savitribai Phule Pune University

PROGRAM STRUCTURE

1st Semester

Generic Core Courses

- 101 Managerial Accounting
- 102 Organizational Behaviour
- 103 Economic Analysis for Business Decisions
- 104 Business Research Methods
- 105 Basics of Marketing
- 106 Digital Business

2nd Semester

Generic Core Courses

- 201 Marketing Management
- 202 Financial Management
- 203 Human Resources Management
- 204 Operations & Supply Chain Management

3rd Semester

Generic Core Courses

- 301 Strategic Management
- 302 Decision Science
- 303 Summer Internship Project

4th Semester

Generic Core Courses

- 401 Enterprise Performance Management
- 402 Indian Ethos & Business Ethics

Major or Minor Specialization

- Marketing Management (MKT)
- Human Resource Management (HRM)
- Financial Management (FIN)
- Operations & Supply Chain Management (OSCM)
- Business Analytics (BA)

Minor Specialization

- Rural & Agri -Business Management (RABM)
- Pharma & Health Care Management (PHM)
- Tourism & Hospitality Management (THM)
- International Business (IB)

ASM's TIE-UPS AND COLLABORATIONS FOR VALUE ADDED CERTIFICATIONS*(Optional)

THESE COURSES BRING TOGETHER INDUSTRY RELEVANT TECHNIQUES AND QUALIFICATIONS BLENDING TOGETHER WITH CUTTING EDGE CERTIFICATIONS WHICH ARE ACCEPTED GLOBALLY

HBS ONLINE

First of its kind tie-up in India, the Harvard Business School Online with the ASM Group of Institutes offers HBS Online program. The program is a bundle of three courses delivered via their innovative online platform. Through this program, students take Business Analytics, Economics for Managers, and Financial Accounting, with course content grounded in the Harvard Business School Online's case method.



E&Y

Presenting the Post Graduate Program in Advanced Data Science, curated and delivered by IMT CDL and EY, leaders in academics and practice of this subject. This program covers the entire gamut of skills and tools required for success – from fundamentals like statistics and data modelling to advanced tools and technologies like Python, Artificial Intelligence and Machine Learning, to even more future oriented technologies like Blockchain



Member
SAP Student Academy Program



SAP

As the market leader in enterprise application software, SAP is at the centre of today's business and technology revolution. SAP helps you streamline your processes, giving you the ability to use live data to predict customer trends and industry expertise.

HARVARD BUSINESS PUBLISHING
CASE STUDIES AND ONLINE COURSES

HBP

Harvard Business Publishing Corporate partners to create world-class leadership development solutions for managers at all levels in global organizations and governments. Offers management insight, thought leadership, and expertise of Harvard Business School faculty and Harvard Business Review authors to provide real life solutions and case studies

IIMBx

IIMBx is founded on the philosophy that management education has strong potential to transform our educational systems and that high quality education must be available to all. The vision of the IIMBx programme is to use digital learning to enable widespread access to management education. Led by the faculty at IIM Bangalore, IIMBx offers online courses and programmes covering core and advanced business and management subjects.



AWS

This foundation course is designed for both technical as well as non-technical students of ASM Group of Institutes. This course is to be offered to all the students across the institutes. The program will help the students to get equipped with relevant knowledge and required skills in the era of digital transformation in business, focusing Cloud Computing



MICROSOFT

Microsoft brings into the course latest technological inputs for a techno commercial role in Business Analytics. The learning is asynchronous blended with Instructor led training.





EVERY YEAR,
THE ASM GROUP OF INSTITUTES
PROVIDES WELL-GROOMED,
**INDUSTRY-READY
PROFESSIONALS TO
200+ COMPANIES**
WHO VISIT OUR CAMPUS
FOR RECRUITMENT

TRAINED FOR INDUSTRY DEMANDS

GLOBAL OUTLOOK

VALUE BASED LEARNING

ENHANCED PERSONALITY DEVELOPMENT

HIGH IMPACT LEADERSHIP SKILLS

SOLUTION BASED INDIVIDUAL

STRONG COMMUNICATION SKILLS

The launch pad for grooming begins on Day One when students come to our campus, through an intensive induction schedule, by the end of which a student has designed a road map for the following years with the institute. Our Industry-Academia-Interface & activities are designed with a lot of consideration to make a student desirable to the industries, and they act as milestones on their journey towards their placements.

PLACEMENT HIGHLIGHTS



RAMESHWAR KATARE
BERGER PAINTS
MARKETING

CTC : 12 LPA



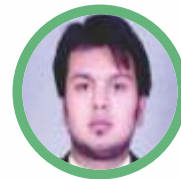
PARITOSH JHA
JARO EDUCATION
MARKETING

CTC : 12 LPA



SHAMBHVI SRIVASTAVA
BYJUS
MARKETING

CTC : 10 LPA



AVESH NIGAM
BYJUS
MARKETING

CTC : 10 LPA



AMOL LOKHANDE
AMAZON
SCM

CTC : 8 LPA



SHUBHANGI SIRSIKAR
PROPERTY PISTOL
MARKETING

CTC : 8 LPA



KUMAR LUV
ICICI BANK LTD
MARKETING

CTC : 7 LPA



SHUBHAJIT MUKHERJEE
XL DYNAMICS
FINANCE

CTC : 6.5 LPA



ROHIT SINGH
UPS LOGISTICS LTD
SCM

CTC : 6.5 LPA



NIKHIL PATIL
K2V2 TECHNOLOGIES (P) LTD.
MARKETING

CTC : 6.5 LPA



PRAGYANSHU SHARMA
HDFC STD. LIFE
MARKETING

CTC : 6.5 LPA



KARTIK WAGHWANI
ICICI BANK
MARKETING

CTC : 6.5 LPA



AWDHOOT BHUTKAR
YATRA.COM
MARKETING

CTC : 6 LPA



VAISHNAVI DESHMUKH
SELL.DO
MARKETING

CTC : 6 LPA



SHUBHAM PANDEY
SAINT GOBIN INDIA (P) LTD
MARKETING

CTC : 5.8 LPA



ABHISHEK KUMAR
TIWANA CATTLE &
MUSTARD OIL (P) LTD
MARKETING

CTC : 5.5 LPA



TEJASWINI AVHAD
INFOAGE
MARKETING

CTC : 5.5 LPA



ABHISHEKH JOSHI
SACHI ENG
HR

CTC : 5 LPA



HRISHIKESH BADE
GLOBEOPP
FINANCE

CTC : 5 LPA



GAURAV NANDAWANSHI
BANDHAN BANK
FINANCE

CTC : 5 LPA



HARI VENKATESH
BNY MELLON
FINANCE

CTC : 4.8 LPA



CLIMENT DANIEL
BNY Mellon
FINANCE

CTC : 4.6 LPA



MANISHA KUMARI
NIELSENIQ
FINANCE

CTC : 4 LPA



NISHATA MANDLE
NIELSENIQ
FINANCE

CTC : 4 LPA


OUR TOP RECRUITERS



Students develop a firm level of understanding of the key functions of business - accounting, finance, management, marketing, management information systems, the global economy, entrepreneurship development, operations management & others.

100% students get engage with the industry to learn about the practical industrial work environment in companies.

WITH A LEGACY OF 39 YEARS AND A STRONG 72,000+ ALUMNI NETWORK, ASM ENJOYS A GREAT PLACEMENT RECORD

PROGRAM OUTCOMES MBA

At the end of the MBA programme the learner will possess the

1. Generic and Domain Knowledge - Ability to articulate, illustrate, analyze, synthesize and apply the knowledge of principles and frameworks of management and allied domains to the solutions of real-world complex business issues.
2. Problem Solving & Innovation - Ability to Identify, formulate and provide innovative solution frameworks to real world complex business and social problems by systematically applying modern quantitative and qualitative problem solving tools and techniques.
3. Critical Thinking - Ability to conduct investigation of multi-dimensional business problems using research based knowledge and research methods to arrive at data driven decisions.
4. Effective Communication - Ability to effectively communicate in cross-cultural settings, in technology mediated environments, especially in the business context and with society at large.
5. Leadership and Team Work - Ability to collaborate in an organizational context and across organizational boundaries and lead themselves and others in the achievement of organizational goals and optimize outcomes for all stakeholders.
6. Global Orientation and Cross-Cultural Appreciation: Ability to approach any relevant business issues from a global perspective and exhibit an appreciation of Cross Cultural aspects of business and management.
7. Entrepreneurship - Ability to identify entrepreneurial opportunities and leverage managerial & leadership skills for founding, leading & managing startups as well as professionalizing and growing family businesses.
8. Environment and Sustainability - Ability to demonstrate knowledge of and need for sustainable development and assess the impact of managerial decisions and business priorities on the societal, economic and environmental aspects.
9. Social Responsiveness and Ethics - Ability to exhibit a broad appreciation of the ethical and value underpinnings of managerial choices in a political, cross-cultural, globalized, digitized, socio-economic environment and distinguish between ethical and unethical behaviors & act with integrity.
10. Life Long Learning – Ability to operate independently in new environment, acquire new knowledge and skills and assimilate them into the internalized knowledge and skills.

POTENTIAL CAREER OPPORTUNITIES



Life at ASM

LEARNING
FROM
LEADERS

INDUSTRY
VISITS

FOREIGN
TOUR

SEMINARS

INTERNSHIP

BUSINESS
SIMULATION
GAMES

INTERNATIONAL
STUDENT
EXCHANGE

CONCERTS

INDUCTION
PROGRAM

CONFERENCES

SOCIAL
GATHERINGS

OUTDOOR TEAM
BUILDING TRIPS

CREATING
WINNERS

SPECIAL
CELEBRATIONS

MINDSCAPE

A CASE STUDY COMPETITION



A unique case study competition, which brings together faculty, industry professionals and students, where industry professionals compete against each other to resolve case studies.

International Conference on Ongoing
Research in Management and Information Technology.

INCON

An International Conference that provides students firsthand experience of the latest trends in business. INCON is an International Conference on Ongoing Research in Management and Information Technology. The academic partners for the event includes University of Pune, CETYS University (Mexico), City University of Seattle (USA), Indo European Education Foundation Center, Vistula University (Poland) and many others over the years.



LEARNING

THROUGH FUN



Opportunities for learning, growing and achieving exist everywhere at ASM. Life at ASM is a blend of academics, extra-curricular and co-curricular activities. Strong student clubs and cell activities give students opportunity to pursue hobbies

of their interest. In addition, activities such as cultural programs, student fests, festival, national celebrations and inter-college events make life at ASM truly colorful, enriching and enjoyable.

TESTIMONIALS



Paritosh Jha
JARO EDUCATION
BDM

Thankful to the faculties as they are very much supportive, helpful and the Placement Cell which is also doing great job by arranging excellent placements and good corporate exposure is given to students.



Preeti Khurd
ICICI BANK
Business Development
Manager

I am thankful to college for providing the program modules which are co-designed, co-developed, co-delivered and certified by leading organizations like IBM, SAP, leading US-CPA training institute-MILES, and delivered in the state-of-the-art IBM analytics and SAP labs on campus.



Komal Puand
HDFC STANDERED LIFE
Management Trainee

I am grateful for the efforts of Department of Corporate Affairs to pitch us all at a platform like HDFC Standered Life and other renowned companies.



Ayush Sinha
OPPO MOBILE
Management Trainee

I thank ASM IBMR & all faculties for putting in all the efforts to groom us and make us corporate professionals. It was a wonderful experience.



Kinjal V. Patel
ICICI BANK LTD
Client Relationship Manager

The global exposure I had during my study at ASM's IBMR was one of the key reasons for me being selected in the ICICI Bank interview.



Konika Thakre
ICICI SECURITIES LTD
Client Relationship Manager

Our Institutes has provided us a very enhanced and efficient platform for the exposure to the training and placement. I am very grateful to the Management for providing us the best Certification like HARVARD BUSINESS SCHOOL placement opportunities and finally I got placed in Fiserv India, one of the Fortune-500 companies.



Roopa Nagaraju
Corporate Communication
Director, Freudenberg

The delivery of the course at IBMR allowed me to acquire a lot of practical knowledge, which I now use on an everyday basis.



Nidhi Sarkar
Business Manager, Global Delivery-
Sogeti (Capgemini), Stockholm Sweden

IBMR's wonderful and serene environment provided the perfect platform for an enlightening and fun education.

TESTIMONIALS



Pushkar Panse
ICICI BANK LTD
Client Relationship Manager

"I think the experience and the exposure to different teaching styles has given me a different perspective about life and what I really want to do. The Career Counseling and Training I received from Training & Placement Cell during semesters has landed me a employment in ICICI Bank for which I'm forever grateful to the institution."



Awdhoot Bhootkar
YATRA.COM
Business Development Manager

The biggest thing for every Management student is to get an opportunity to start their career with a reputed organization and a good package. I was lucky to get placed with Yatra.com.



Manasi S. Dhumal
ICICI BANK LTD
Business Development Manager

This college surely has the best of the infrastructure you can imagine. You can never be short of opportunities once you get in this college ASM IBMR has finest professors of IBMR nurtures you in a way that, you not only excel in your academics but in the real time challenging and professional environment.



Shubham Pandey
BUSINES DEVELOPMENT MANAGER
SAINT GOBAIN

I thank ASM IBMR & all faculties for putting in all the efforts to groom us and make us corporate professionals. It was a wonderful experience.



Suraj Ganeshkar
FUTURE GENERALI
Client Relationship Manager

My sincere appreciation & gratitude to the Training & Placement Department and all staffs of ASM IBMR Institute their efforts in imparting quality technical and aptitude training. I am very grateful to them for effectively and sincerely helping me to grab first ever opportunity that came into my life."



Kumar Luv
ICICI BANK LTD
Business Development Manager

I am pursuing MBA from ASM and would like to add that the ASM and the faculty members are very student friendly and approachable in nature. The faculty members make sure that all the sessions are interactive and interesting in nature. They use a lot of case studies, discussions, role-plays and many innovative ways of evaluation. The University organizes various industrial visits, guest lectures, conferences and case conclaves to give a hands on experience to its students



Veeraiah Chowdary
Managing Director, Orange One

The mentoring program at ASM's IBMR has been a life changing experience for me and I owe my success to my mentors.



Prachee Sonchal
Associate Director, Emerson
Automation Solutions

I enjoyed the rich and open-minded interaction between my classmates and professors during my course at IBMR.

LEGACY OF
39 YEARS
DRIVEN BY A STRONG TEAM OF
CORE FACULTY,
INTERNATIONAL FACULTY
& INDUSTRY FACULTY,
ASM'S IBMR
TAKES PRIDE IN ITS
HIGHLY QUALIFIED
AND
EXPERIENCED FACULTY

INTERNATIONAL FACULTY FROM TOP UNIVERSITIES ACROSS THE WORLD @ ASM's IBMR



Petr Castka
International Recruitment Manager,
The University of Finance
and Administration,
Prague, Czech Republic



Roman Mentlik
Manager - S & D
Financial services leader
IBM, Prague, Czech Republic



Diana Woolfolk
Dean of Business and
Management School,
CETYS University, Mexico



Sergio García Velázquez
Teacher at
CETYS University



Anna Opalka
Administrative Director
of the Research and Development
Centre of Renovation and
Conservation, University of
Applied Sciences in Nysa, Poland



Eduardo Durazo Watanabe
Professor at the Business and
Management School,
CETYS University



Myriam Ross
Teacher at CETYS University



Ulises Lopez
Teacher at CETYS University



Jennifer Muskett
University of Southampton Solent



Kurt Kirstein
Associate Provost of
City University of Seattle



Prof Margherita Mori
Full Professor in
University of L'Aquila, Italy



Dr. Mario Kolberg
University of Stirling



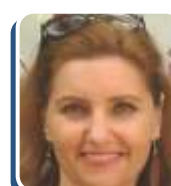
Dr. Scott Venezia
Dean, Academics,
CETYS University, Mexico



Dr. David M. Williams
University of Surrey



Prof. Ian Wakeman
University of Sussex



Paulina Krytosiak
Institute of Computer Science
Polish Academy of Sciences
(IPI PAN), Poland



Sergiusz Pukas
Lecturer and Coordinator for
Postgraduate Programs and
International Cooperation
Institute of Computer Science
Polish Academy of Sciences
(IPI PAN), Poland



Dr. Ghassan B. Oweis
Doctor of Business Administration,
Tourism Management Expert, Jordan



Dr. Sylvia Monica
Perez Nunez -
Docente de Tiempo Completo.
CETYS Universidad,
Campus Tijuana.
Escuela de
Administración y Negocios



Dr. Ronald Newton
Director ISODC USA



Prof. Antonio Esquedaflores
Assistant Provost of International
Operations at City University of Seattle



Dr. Mahdi Fikri
Al-Alami Certified
Management Trainer &
Consultant, Jordan

INDUSTRY FACULTY TEAM @ ASM's IBMR



Prashant Jadhav
CIO, Franke Faber



Manjeet Singh
CIO, Bilcare Ltd.



Amit Shukla
CIO, Kirloskar brothers



Vinay Nair
CEO
Aaria Biolife Sciences Pvt. Ltd.
(Harvard Business School alumni)



Jay Kumar Shah
Associate VP
Tata Capital Financial Services
(Harvard Business School alumni)



Dr. Pratik Surana
Chief Mentor & Founder
Bodhisattva Learning Pvt. Ltd.



Dr. K. K. Jain
Processor, IIM Raipur



Sanjeev Joshi
Senior Practice Director,
Birlasoft



Dr. C. M. Chitale
HOD
Professor PUMBA,
I/C Director EMRC



Parimal Vadhar
Director
Rupam Group of Companies
(Harvard Business School alumni)



Dr. S G Bapat
Faculty of Management



Romi Kumar
Assistant General Manager
Starship Global VCT, Manipal



Naveen Yadav
Digital marketing operations,
Leader at IBM India Pvt Ltd.



Rajib Bhattacharya
Director Global leader-
Data Analytics, CARGILL



Nishkant Ojha
Principal Advisor
(Information Technology
& Innovations)



Imtiyaz Peerzade
Director DAI,
Blazeclan Technologies.



Ajay Bhosale
Advisory Board Member
for ASM's SAP Training Program



Sambhaji Chawale
CEO
PRIMUS Techsystems Pvt. Ltd.



Apurva Chamaria
Head of Partnership Solutions,
Startups & Venture Capital
Google India



Devender Kumar
Sr. Manager
Hr. & Strategy
Patanjali



Himanshu Goyal
Director Channel sales
and ecosystem-
Browserstack



**Commander
V. K. Jaitely**
CEO C-cube consultants,
Advisor India America Today



**Amaralingeswara
Rao Kaka**
M.Tech, Computer Science,
JNU, Delhi



Sandesh Banger
Finance Expert



Mr. Jimit Shah,
Associate Director-PR &
Communications, Rupeek



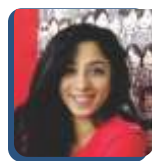
Haresh Krishna Kumar
MD & General Manager,
Quest Software



Praveen Bhamare
SAP, Delivery Head TCS



Mr. Raghavendra Bhat
Intellectual property rights and
Innovation consultant, INNOPSIS



**Ms. Kruthi
Aramanamada**
GM Marketing At, Ideaforge



**Ms. Tanushree
Ishani Das,**
Founder, BodyCafe.in

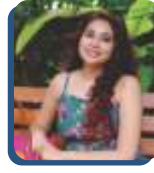
INDUSTRY FACULTY TEAM @ ASM's IBMR



Mr. Narendra Deshpande
CEO, Construction Skill
Development Council of India



Dr. Abhilasha Gaur
Chief Operating Officer, Electronics
Sector Skills Council of India



Ms. Karishma Shah
Founder CEO,
Karishma Shah Nutrition



Mr. Amit Anwani
Financial Analyst
associated with leading broking
firm of India



Dr. (Mrs.) Pankaj Mittal
Secretary General
Association of Indian Universities



Mr. Prabhat Chaturvedi
CEO, Netafim Agricultural
Financing Agency (NAFA)



Swathy Rohit
CEO, Health Basix



Ms. Anu Chaudhary
Founder CEO,
Sustain Plus



Lealie Loh
CEO,
Lithan, Singapore



Ms. Swagata Gupta
Director - Communication
Cashfree



Abhay Maheshwari
Story Teller, Writer, Storyteller,
podcaster and Space Success Lead at ZS.



Ramveer Tanwar
The pondman of India,



Rishi Tanna
Accountant | Ex-Deloitte
Associate at EY



Ms. Neha Sharma
Corporate Human Resource Manager,
SBI General Insurance



Sagar Amlani
CEO, Zapro Consultant



Ms. Annabel Kore
Brand Evangelist,
Onsite Electro Services Pvt Ltd



Soni Agarwal
Communications Lead at,
Syngenta

PGDM COURSES AT IBMR | IMCOST

PGDM Dual Specialization

PGDM Agribusiness

PGDM COURSES AT IMCOST

PGDM Pharma

FOR ADMISSIONS CONTACT

CHINCHWAD

ASM Group of Institutes,
MIDC, Block 'C', Chinchwad,
Pune, Maharashtra 411019
+91 9422009207/09/10/12

THANE

Institute of Management
& Computer Studies,
C-4 Wagle Industrial Estate,
Near Mulund (W)
Check Naka, Thane (W) 400604
Tel: 022(25832452 / 25832466)
Mob: +91 9820816932

KOLKATA

IFS Business Centre 206/1,
Rashbehari Avenue 4th Floor,
Gariahat Kolkata -700 029

Mr. Dhritiman Chakravorty

+91 98311 73476

E: dhritiman@asmedu.org

BANGALORE

Ms. Vaishali Jawale

+91 9922991756

vaishalijawale@asmedu.org

ODISHA

+91 8114648942/8984162711



MIDC, Block 'C', Chinchwad, Pune, Maharashtra 411019

T: (020) 27475090 / 8666 | M: +91 9422009207/09/10/12 | E: admission@asmedu.org | W: www.asmgroupp.edu.in

THE ASM GROUP OF INSTITUTES : IBMR | IPS | IMCOST | CSIT | GJC | GEMS