

NEET PG 2019

QUESTION PAPER WITH ANSWERS



NEET PG 2019 Question Paper with answers

Q: Drug used for smoking cessation?

A: Varenicline

Q: Premature ejaculation is a disorder of which phase of the sexual response cycle?

A: Orgasmic

Q: CAM is used for screening test as

A: Delirium

Q: What is the morbid fear of darkness called?

A: Nyctophobia

Q: Not true about somnambulism?

A: Consciousness intact

Q: True about acute fatty liver in pregnancy

A: Occurs late in pregnancy

Q: A man who is a chronic alcoholic will develop which type of cardiomyopathy?

A: Dilated

Q: Which of the following is true about the bundle of Kent?

A: It is a muscular pathway between the atria and the ventricle in WPW syndrome.

Q: A 20-year-old patient is presented with breathlessness and chest pain. His vitals were BP: 80/60 mmHg, Pulse: 105, spO₂: 91%. Next best line of management?

A: Cardioversion

Q: Identify the following ECG?



A: Atrial Flutter

Q: Deep venous thrombosis which is incorrect?

A: Clinical assessment is highly reliable

Q: A risk factor in Alzheimer's disease include

A: Down's syndrome

Q: Which of the following is included in essential major blood culture criteria for ineffective endocarditis

A: Single positive culture of coxiella

Q: Evidence of endocardial involvement by positive echocardiogram

A:

Q: Meld score includes

A: serum creatinine

Q: Which of the following murmur increases in standing?

A: HOCM

Q: Osborn J waves are seen in

A: Hypothermia

Q: Punched out Ulcer in the esophagus is seen in?

A: Herpes zoster virus

Q: Infarcts involving which portion of the myocardium causes aneurysm as a post Myocardial infarction complication

A: Anterior transmural MI

Q: Which is not related to HIV

A: Tertiary syphilis

Q: A 26-year-old female patient presented with oral ulcers, sensitivity to light, and rash over the malar area of the face sparing the nasolabial folds of both sides, Which of the following indicates the condition associated?

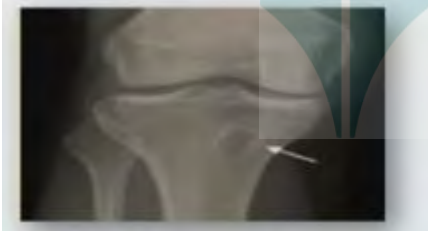
A: SLE

Q: Type of sensation lost on the same side of brown sequard syndrome:

A: Proprioception.

Q: Child with a recent history of fever, lesion with a sclerotic rim in the upper end of the tibia.

Identify the condition as shown:



A: Brodie abscess

Q: The most common joint involved in septic arthritis:

A: Knee

Q: Which of the following statement is wrong about the pathology shown in the image below:



A: Chemotherapy is the treatment of choice

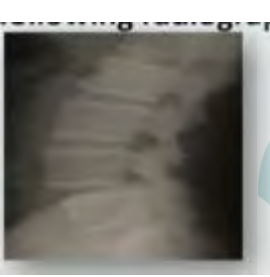
Q: Foot drop is caused by injury to which nerve involvement?

A: Common peroneal nerve

Q: Pott's puffy tumor

A: Subperiosteal abscess of the frontal bone

Q: What should be the most likely diagnosis of this 65 year old lady presents with backache and following radiograph of the spine shown in the image



A: Spondylolysis

Q: Painful arc syndrome pain is felt during?

A: Mid abduction

Q: Which of the following attitude will be seen in patients with posterior dislocation of the hip?

A: Flexion, abduction and external rotation

Q: Which part of the scaphoid fracture is most susceptible to avascular necrosis?

A: Proximal 1/3rd

Q: True about Dequervain's tenosynovitis of the finger?

A: It affects APL and EPB

Q: Which of the following is water soluble contrast?

A: Iodine

Q: Identify the infection from the x-ray sheet of the patient with low grade fever



A: Miliary TB

Q: Identify the condition given in the image



A: ventricular tachycardia

Q: A patient presented with a history of diplopia and restricted eye movements. A clinical image and CT scan is shown below, What will be the diagnosis?



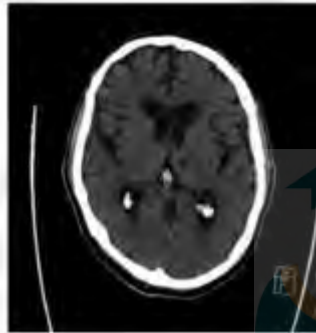
A: Blow out fracture

Q: Identify the radiology procedure shown below:



A: Barium meal follow-through

Q: Identify the condition in the below image



A: Lacunar Infarct

Q: Solitary lytic lesions seen in

A: Multiple Myeloma

Q: The causative organism for the condition depicted in the image below is:



A: Staphylococci

Q: All are true about the skin except?

A: Both dermis and ectoderm are derived from ectoderm

Q: A child with a history of fever, photosensitivity, rash sparing nasolabial fold presents to OPD. Identify the condition?

A: SLE

Q: Patients present with the purpura of inter digits of the left hand as shown in the image below. Identify the condition:



A: Sarcoptes Scabiei

Q: Identify the condition shown in the image below:



A: Alopecia areata

Q: Identify the condition in the image below:



A: Vitiligo

Q: Which of the following regarding the condition depicted in the image?



A: Maybe associated with insulin-resistant diabetes mellitus

Q: Zellweger syndrome is due to the absence of

A: Peroxisome

Q: Urea, creatinine, nitric oxide formed by which amino acid?

A: Arginine

Q: Which of the following is not the source of cytosolic NADPH?

A: ATP citrate lyase

Q: All are true about the mitochondrial DNA, except?

A: All respiratory proteins are synthesized within mitochondria itself.

Q: Which apolipoprotein is responsible for Alzheimer's disease?

A: APOE4

Q: Hyperammonaemia inhibits the TCA cycle by developing?

A: A ketoglutarate

Q: Which amino acid is used for synthesizing nitric oxide?

A: Arginine

Q: Menkes disease is associated with which enzyme deficiency?

A: Lysyl Oxidase

Q: LCAT deficiency increase?

A: HDL

Q: A 25 year old alcoholic is presented with edema, hypertension, ocular disturbance, and changes in the mental state were observed, diagnosis of high output cardiac failure was made with Beri Beri, this is due to the deficiency of?

A: Vit B1

Q: Glutamine is an increase in CSF, Blood, and urine, this is due to the deficiency of?

A: CPS-I

Q: True about Type 1 diabetes mellitus

A: Increased lipolysis

Q: Protein that is not synthesized in the liver is?

A: immunoglobulins

Q: Type of cholesterol present in gallstone?

A: Crystalline cholesterol monohydrate

Q: Collagen present in skin is

A: Type I

Q: Which of the following is not Ribozyme?

A: Poly A polymerase

Q: Type-I hyperlipoproteinemia is characterized by

A: Elevated chylomicrons

Q: In Kreb's cycle and urea cycle the linking amino acid is?

A: Aspartate

Q: Structure derived from first pharyngeal arch:

A: Anterior belly of digastric

Q: Joint involved in movement of head from left to right is?

A: Atlanto axial

Q: What is the nerve supply of Submandibular gland:

A: Lingual Nerve

Q: Parathyroid gland is implanted in which muscle?

A: Brachioradialis

Q: Right coronary artery arises from?

A: Right Aortic Sinus

Q: Which nerve passes through the marked foramen in the given image:



A: Inferior alveolar nerve

Q: Identify the marked muscle 'A' in the diagram:



A: Extensor carpi radialis longus

Q: Duct of Bellini are present in:

A: Kidney

Q: Which of the following exocrine glandular ducts are not obstructed in cystic fibrosis:

A: Sweat gland

Q: Boot shape of heart in TOF is due to:

A: Right ventricular hypertrophy

Q: Which of the following structure is not derived from external oblique muscle?

A: Linea semilunaris

Q: Contralateral loss of pain and temperature is due to injury to:

A: Lateral spinothalamic tract

Q: Space of Disse is in:

A: Liver

Q: What are Gitter cell?

A: Modified macrophages in CNS

Q: Testosterone secreted by,

A: Leydig's cells.

Q: Aquaporin channel mediated through ADH:

A: Aquaporin 2

Q: All are true about Decerebrate posture EXCEPT:

A: Flexion of upper extremity and extension of lower extremity

Q: Functional residual capacity represents the volume of air remaining in lungs

A: After normal expiration

Q: Tubuloglomerular feedback control is useful for which one of the following?

A: GFR.

Q: Calcitonin levels increased in

A: Hyperparathyroidism

Q: $F_{EV1}=1.3$ & $FCV=3.9$, Which of the following does this signify?

A: Obstructive lung disease

Q: Antegrade peristalsis due to?

A: VIP

Q: C-peptide is seen

A: In proinsulin

Q: Oral Factor Xa Inhibitor is:

A: Rivaroxaban

Q: High plasma protein binding of a drug results in:

A: Decreased glomerular filtration.

Q: Identify the true statement regarding Clinical Trials

A: Randomized Controlled Trials in patients is done in Phase III

Q: Fluoroquinolone with highest oral bioavailability:

A: Gemifloxacin

Q: Which of the following is a K^+ Channel Opener?

A: Nicorandil

Q: A Rheumatoid Arthritis patient on Methotrexate, Steroids and NSAIDs for past 4 months has had no retardation of disease progression. What is the next rational step in management?

A: Stop oral Methotrexate and start parenteral Methotrexate

Q: Tolvaptan is used for:

A: SIADH

Q: Buspirone acts on:

A: $5HT_{1A}$

Q: Carbapenem with maximum seizure risk is:

A: Imipenem

Q: Cilastatin is given in combination with Imipenem because:

A: Cilastatin prevents degradation of Imipenem in kidney

Q: Mechanism of action of Triazoles:

A: Inhibits ergosterol biosynthesis

Q: Identify the false statement regarding Teduglutide is:

A: A pancreatic enzyme

Q: Hypertension and pulmonary edema associated with scorpion sting is managed by:

A: Prazosin

Q: Mannitol is used in the management of:

A: Acute Congestive Glaucoma

Q: Drug inhibiting granulocyte migration is:

A: Colchicine

Q: Identify the parasite from the accompanying microscope picture of oocysts as seen in stool sample of a patient suffering from watery diarrhea. DOC for this parasitic disease is:

A:

Q: Inhalational anesthetic with highest respiratory irritation is:

A: Desflurane

Q: Indication for use of Pegylated Filgrastim is in the correction of

A: Neutropenia

Q: Agent used for eliciting diagnostic differentiation of Myasthenia Gravis from Cholinergic crisis is:

A: Edrophonium

Q: Anesthetic not painful on Intravenous administration is:

A: Ketamine

Q: Mechanism of action of curare like drugs:

A: Competitive, Non depolarizing block at the Nm cholinergic receptors

Q: Reason for preferring cis-Atracurium over Atracurium is:

A: Lesser provocation of histamine release

Q: Contraindications to use of Beta Blockers:

A: Bronchial Asthma

Q: Drug of Choice for Digoxin induced Ventricular Tachycardia:

A: Lignocaine

Q: Vitamin A is stored in

A: Ito cell

Q: Glanzmann thrombasthenia is due to defect in

A: Gp IIb/IIIa

Q: Which of the following is an antiapoptotic gene?

A: Bcl2 and Bcl – XL

Q: Which of the following is true about alpha 1 antitrypsin?

A: Inhibits elastase

Q: Fish mouth stenosis in Rheumatic heart disease is due to

A: Calcification and fibrosis bridging across valvular commissures

Q: Which of the following is autosomal recessive disorder?

A: Cystic fibrosis

Q: Which of the following is/are is endogenous pyrogen?

A: IL1 and TNF

Q: IL-1 is activated by

A: Caspase 1

Q: Rigor mortis first seen in

A: Heart

Q: Punishment of Perjury is given by

A: 193 IPC

Q: Identical twins can be differentiated by

A: Finger print

Q: True regarding battered baby syndrome:

A: Multiple injuries at different ages

Q: True about Congenital Rubella syndrome is:

A: It will become a chronic infection

Q: A 9 years old child presented to OPD with complaints of high grade fever, vomiting, one episode of seizure. CSF examination was done and Gram staining of the culture showed the following finding. What is the probable causative agent?

A: Streptococcus pneumoniae

Q: HIV patient presented with diarrhea. On stool examination, following acid fast organisms was seen. What is the drug of choice in this patient?

A: Nitazoxanide

Q: A person working in an abattoir presented with malignant pustule on hand; What is the causative agent?

A: Bacillus anthracis

Q: Diagnostic method of choice for leptospirosis:

A: MAT

Q: Investigation of choice for neurosyphilis:

A: VDRL

Q: Ideal dose of Diphtheria antitoxin given for treatment is:

A: 20,000 to 1,00,000 units

Q: A neonate was found to have cataract, deafness and cardiac defects. Which group of viruses does the mother was infected with:

A: Togaviridae

Q: Which vaccine is contraindicated in pregnancy?

A: Chicken pox

Q: Which vaccine strain is changed every yearly?

A: Influenza

Q: Flask shaped ulcers seen in a dysentery patient is diagnostic of:

A: Amoebiasis

Q: A 35 years old man presented with dry cough and rusty coloured sputum; He has history of eating in chinese restaunt very often with consumption of crabs often; What is the probable causative agent in this condition?

A: (C) Paragonimus westermani

Q: Culture media for Legionella:

A: BCYE agar

Q: Special stain for Cryptococcus:

A: Mucicarmine stain

Q: Disk diffusion method is also known as:

A: Kirby Bauer method

Q: A child is suffering from recurrent chronic infections with encapsulated bacteria; Which subclass of IgG does the child has deficiency?

A: IgG2

Q: Infection of following organism has clinical features resembling erythroblastosis foetalis?

A: Cytomegalovirus

Q: An AIDS patient presented to OPD with dyspnoea and respiratory illness; Which of the following is suitable to diagnose the opportunistic infection commonly seen in AIDS patient?

A: BAL

Q: A 2 year old boy with Vitamin A deficiency is treated with

A: 2 Lak IU on days 0,1,14

Q: What is the Size of this blade used in incision and Drainage?

A: 11 size

Q: Not a part of personal protective kit:

A: Lab coat

Q: If a mother is donating her kidney to her son- This is an example of

A: Allograft

Q: Parathyroid Gland accidentally removed and found after surgery is implanted in

A: Brachioradialis

Q: Teduglutide is a recently introduced drug for Short Bowel Syndrome- What is it?

A: GLP -2 analogue

Q: A patient complains of breathlessness following a trauma, Trachea shifted to opposite side, Resonant percussion note seen with absent Breath sounds. On insertion of ICD- False statement is

A: Inserted into 4th or 5th ICS along the Scapular Line

Q: A patient presents with heaviness of leg with veins of diameter less than 1mm over the posterior part of the calf- Under CEAP , classification it comes under

A: C1

Q: 45 years female with 3 months menorrhagia. USG showing 2 cm submucosal fibroid. First line of management is:

A: Endometrial sampling.

Q: Patient with recurrent abortion diagnosed to have antiphospholipid syndrome. What will be the treatment:

A: Aspirin + Low molecular weight Heparin

Q: 60 year woman comes with 3rd degree uterine prolapse. What will be the management?

A: Vaginal hysterectomy with pelvic floor repair

Q: Day 20 of menstrual cycle falls under which phase?

A: Luteal phase

Q: Female with 41 wk gestation confirmed by radiological investigation, very sure of her LMP, no uterine contractions, no effacement and no dilatation. What should not be done?

A: PGF2alpha

Q: The dosage of Vitamin A in keratomalacia in a 2 year old boy who is 12 kg weight is

A: Vitamin A :2 lakh I U ,oral , 1st , 2nd and 14th day

Q: A 3 year old child is presenting with drooping of upper lid since birth. On examination , the palpebral aperture height is 6 mm and with poor levator palpebrae superioris function. What is the procedure recommended?

A: Frontalis Sling surgery

Q: Test based on the principle of suspect's reaction, if he witnesses an event then he behaves in a certain way is?

A: Polygraph

Q: Which of the following is not true regarding delusional disorder?

A: Occurs at early age

