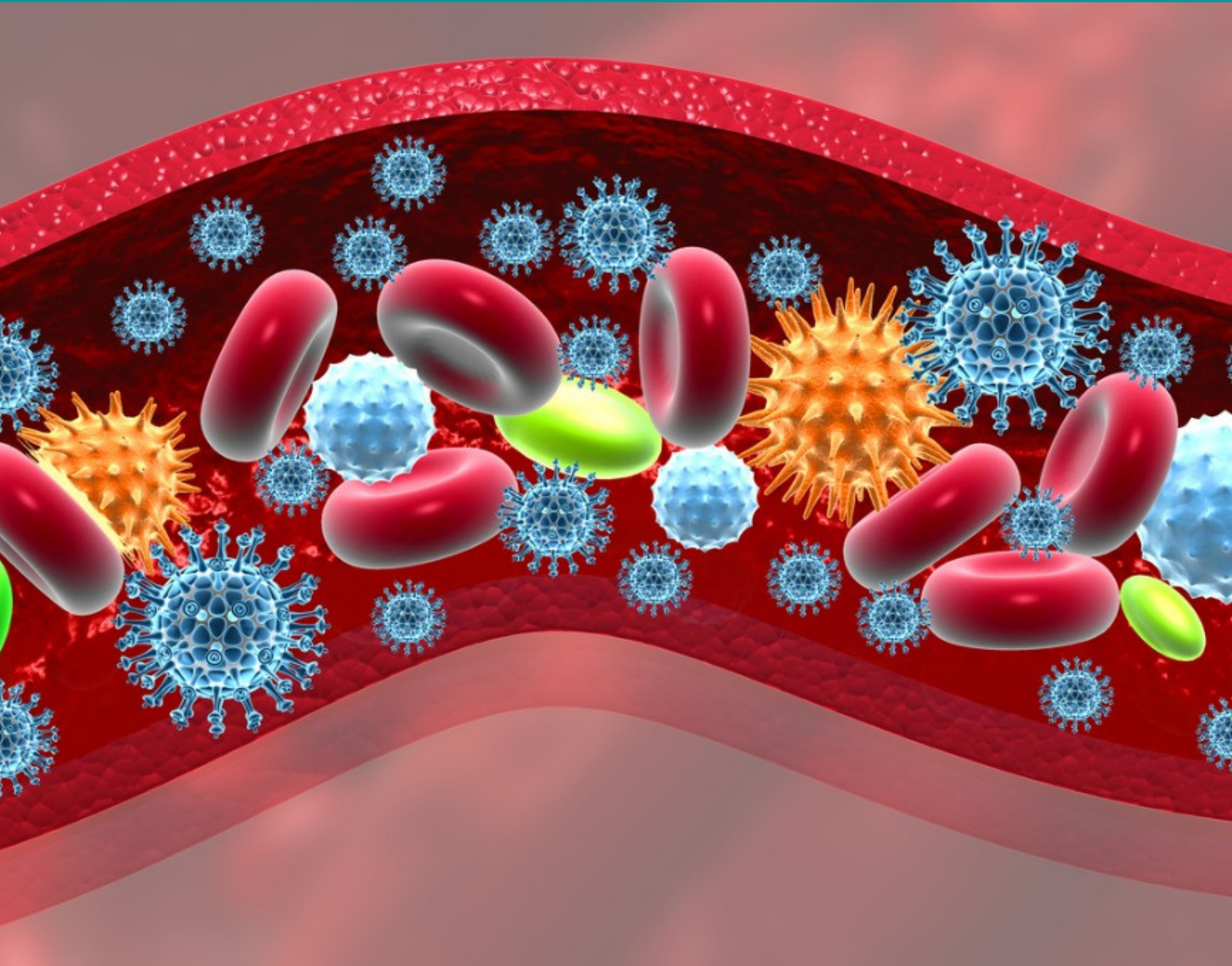


NEET

Biological Classification NEET Questions

With Answer Key



Q1: The bacteria that are motile can move by using the following methods:

- (a) Fimbriae
- (b) Cilia
- (c) Pili
- (d) Flagella

Q2: A prokaryotic cell does not have which of the following structures?

- (a) Ribosome
- (b) Mesosome
- (c) Plasma membrane
- (d) Nuclear envelope

Q3: Which of the following are the most appropriate environmental indicators of SO₂ pollution?

- (a) Lichens
- (b) Conifers
- (c) Algae
- (d) Fungi

Q4: Which of the following statements about viroids is incorrect?

- (a) They lack a protein coat
- (b) Their RNA is of high molecular weight
- (c) They are smaller than viruses
- (d) They cause infections

Q5: Which kingdom includes Chrysophytes, Euglenoids, Dinoflagellates, and Slime Molds?

- (a) Monera
- (b) Fungi
- (c) Animalia
- (d) Protista

Q6: Which of the following components gives the bacterial cell its sticky quality?

- (a) Glycocalyx
- (b) Nuclear membrane
- (c) Plasma membrane
- (d) Cell wall

Q7: Eukaryotic unicellular organisms are all members of this group.

- (a) Monera
- (b) Protista
- (c) Fungi
- (d) Bacteria

Q8: The concept of a five-kingdom system was proposed by

- (a) C. Linnaeus
- (b) A. H. S. Huxley
- (c) R.H. Whittaker
- (d) Virchow

Q9: Naked cytoplasm, multinucleated and saprophytic are the characteristics of

- (a) Monera
- (b) Protista
- (c) Fungi
- (d) Slime molds

Q10: There is a link between mycobiont and phycobiont in

- (a) lichens
- (b) mycorrhiza
- (c) root
- (d) BGA

Q11: What's the distinction between a virus and a viroid?

- (a) presence of low molecular weight RNA in virus, but absent in viroid
- (b) absence of protein coat in viroid, but present in the virus.
- (c) Both (a) and (b)
- (d) None of the above

Q12: Diatoms, the primary producers in the oceans, are members of this category.

- (a) chrysophytes
- (b) slime moulds
- (c) dinoflagellates
- (d) euglenoids

Q13: Bacteria have been assigned to the kingdom Monera as they are

- (a) unicellular
- (b) prokaryotes
- (c) microscopic
- (d) decomposers

Q14: Lichens are formed as a result of

- (a) soredia
- (b) conidia
- (c) zoospores
- (d) zygosporangia

Q15: Whittaker uses which of the following characteristics for organism classification?

- (a) Mode of nutrition
- (b) Thallus organisation
- (c) Phylogenetic relationships
- (d) All of the above

Biological Classification NEET Question

Answer Key

Q1 - (d)

Q2 - (d)

Q3 - (a)

Q4 - (b)

Q5 - (d)

Q6 - (a)

Q7 - (b)

Q8 - (c)

Q9 - (d)

Q10 - (d)

Q11 - (b)

Q12 - (a)

Q13 - (b)

Q14 - (a)

Q15 - (d)